

*Ridea*  
h e a t i n g   d e s i g n

2010  
duemiladieci

# COLOUR LIST 2010

## Classic Collection



RAL 1018  
Giallo zinco



RAL 1003  
Giallo segnale



RAL 2000  
Arancio giallo



RAL 2004  
Arancio puro



RAL 3000  
Rosso fuoco



RAL 3003  
Rosso rubino



RAL 3004  
Rosso porpora



RAL 3014  
Rosa antico



RAL 4003  
Viola erika



RAL 4006  
Porpora



RAL 4008  
Viola segnale



RAL 4001  
Rosso lilla



RAL 4004  
Viola bordeaux



RAL 8016  
Marrone mogano



RAL 6018  
Verde giallo



RAL 6001  
Verde smeraldo



RAL 5012  
Blu chiaro



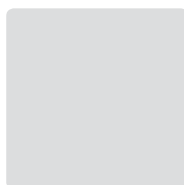
RAL 5015  
Blu cielo



RAL 5010  
Blu genziana



RAL 7008  
Grigio kaki



RAL 7035  
Grigio luce



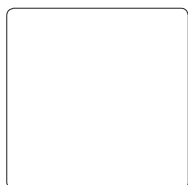
RAL 7005  
Grigio topo



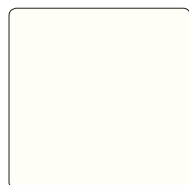
RAL 7025  
Grigio perla



RAL 7024  
Grigio grafite



RAL 9016  
Bianco traffico



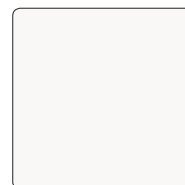
RAL 9010  
Bianco puro



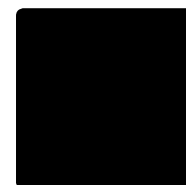
RAL 9010 sablè  
Bianco puro



RAL 1013  
Bianco perla



SW213F  
Annapurna



RAL 9005  
Nero profondo

Al momento dell'ordine specificare la finitura, se lucida o opaca  
At the moment of the order indicate the finish, if bright or matt



MW5111  
Gallium



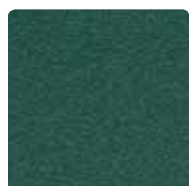
SW305F  
Blu 700 sablè



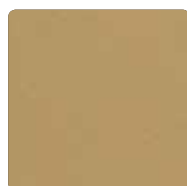
YW357F  
Violet 2100 sablè



Foglia oro  
Gold leaf



SW304F  
Vert 500 sablè



Gold  
MW136E



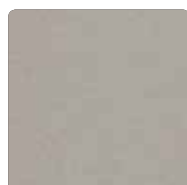
Bronze  
SW205F



Foglia argento  
Silver leaf



SW208F  
Marron d'Inde



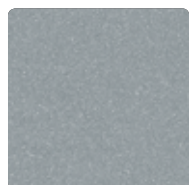
Champagnafrosty  
SAP 10020



M3000I  
Nickel



Anodizzato  
Anodized



SAP 13931  
Silver satin



MX302L  
Bismuth



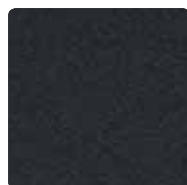
MW600L  
Bromine



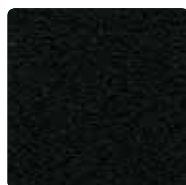
Sfumato  
Faced



SXJ02F  
Noir 163 chinè



SW306F  
Noir 200 sablè

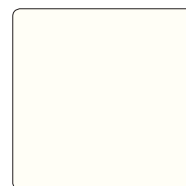


SN351F  
Noir 900 sablè

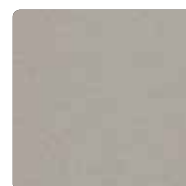


Spazzolato  
Brushed

## Othello Collection



RAL 9010 sablè  
Bianco puro



Champagnafrosty  
SAP 10020



MW5111  
Gallium



MW600L  
Bromine



SW306F  
Noir 200 sablè

